



Optum One

The Intelligent Health Platform



The Optum One intelligent health platform enables healthcare providers to manage patient populations. The platform combines the industry's most advanced integrated data platform with the most powerful predictive and clinical analytics to deliver targeted action at the point of care.

Proactive population management is crucial. To do this healthcare organizations need to uncover insights and patterns, confidently predict risk and then pivot this knowledge into targeted action at the point of care – from patient outreach to care coordination.

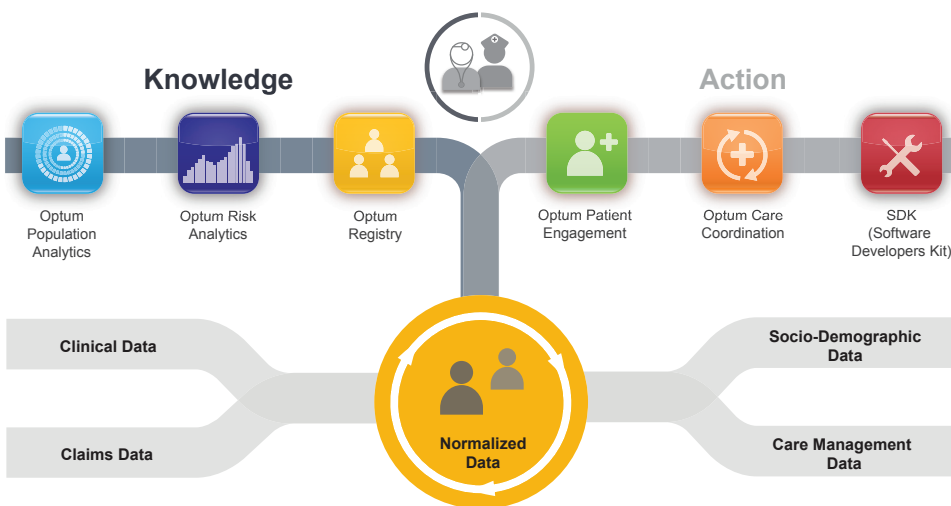
Optum One, Supporting Today's Needs, Tomorrow's Plan

Optum One is designed to support a growing set of integrated analytics and population management applications on a single infrastructure. It is extensible so that it meets your changing needs - whether your contracts are fee-for-service, pay for performance, patient centered medical home, fee-for-value, or somewhere in transition.

The data aggregation platform is electronic medical record (EMR) and claims source agnostic, meaning that no matter which EMR or payer contract your organization is using, we deliver aggregated and cleaned data back to you in the platform. Optum brings decades of experience in working with complex data sources across hundreds of healthcare provider organizations to give our clients the confidence of a trusted partner.

Optum One

- An integrated analytics platform that is purpose built for the healthcare provider market
- Delivers analytics insights at the point of care, especially valuable for those “morning huddles” when the opportunity to improve health and lower cost is greatest
- Modular apps that are seamlessly integrated into one platform
- Enables effective, risk-driven, cross-continuum, care management
- Facilitates true patient-centric, longitudinal population management that supports value based payment



The Industry's Most Advanced Integrated Data

The Optum One platform is powered by the most comprehensive longitudinal and largest integrated data set in the market today. By harnessing such a large data set, we can discover more patterns and make more accurate predictions.

But it's not just "big data"; it's the industry's most accurate and advanced integrated data. By integrating claims, clinical, socio-demographic and care management data, you receive both a retrospective and prospective view of your patients and patient populations. This type of view enables you to identify at-risk patients earlier, preserve patient health, reduce costs and prevent complications.

Leaders in Risk Prediction

Optum is the industry leader in risk prediction. As the only company that has brought financial and clinical risk modeling together to drive focused, high value population management, we allow you to identify patients with high value conditions, understand the opportunities for intervention (before the hospitalization or cost has occurred) and assess where there is an effective clinical pathway to address the problem. Our predictive models cover a range of diseases, including congestive heart failure, chronic obstructive pulmonary disease, diabetes and pediatric asthma, and predict the likelihood of hospitalization so you can target your intervention before health worsens or costs are incurred.

Seamless Integration of Knowledge and Action Apps

The Optum One platform and applications are designed to deliver insightful knowledge and enable targeted action. While they work seamlessly together, they are modular so that healthcare providers can utilize the applications they need as they move from fee-for-service to fee-for-value. The base solution includes the platform and the Optum Population Analytics module. All other modules can be added as needs evolve.

Optum One

- Approaching 40 million treated patients with clinical data
- 20 years of longitudinal claims data
- 700 million clinician notes processed monthly using Natural Language Processing software
- Over 3.1 billion lab results processed monthly
- 1.0 billion procedures processed monthly
- 1.4 billion diagnoses processed monthly
- Over half a billion medication prescriptions processed monthly



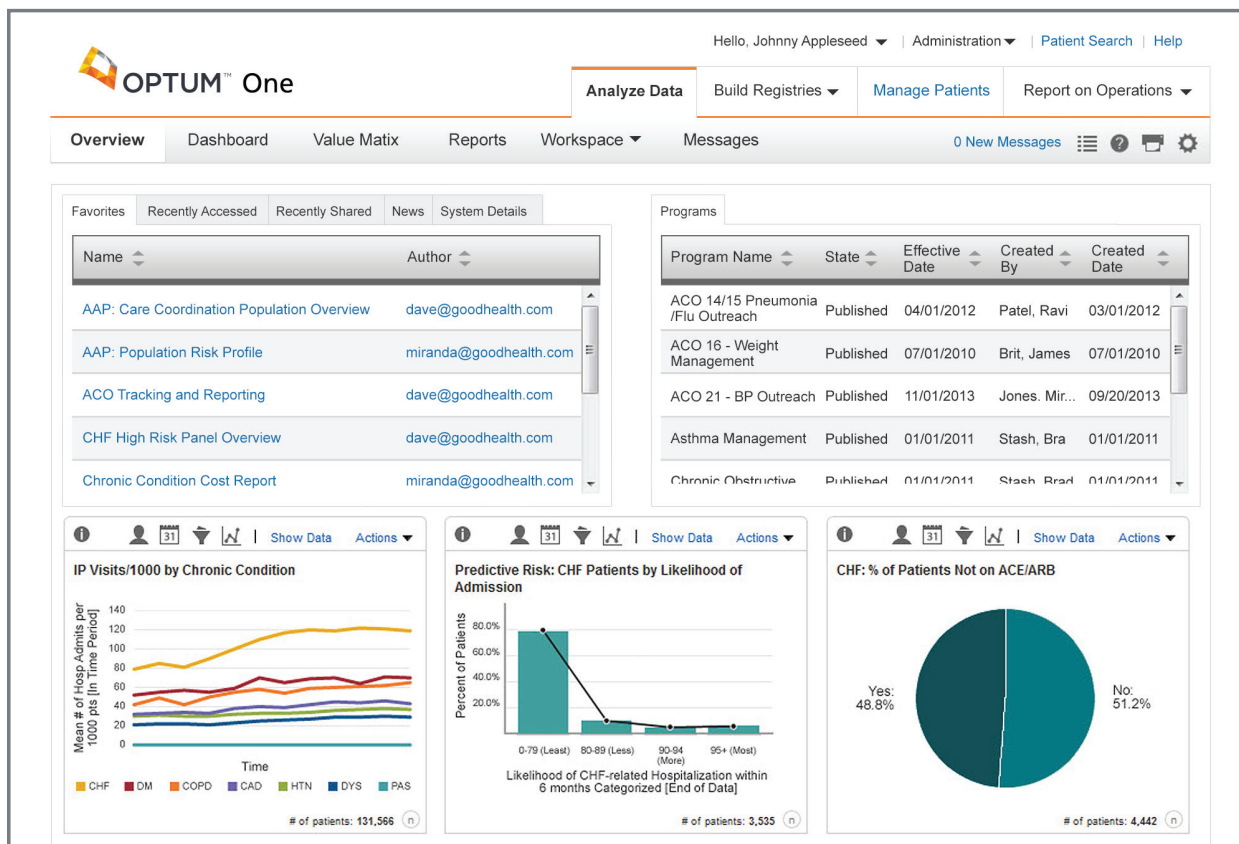


Optum Population Analytics

Optum Population Analytics App

The Population Analytics module sits at the core of the platform and provides a rich patient-centered longitudinal view of your patient population. Care patterns, care delivery, clinically driven predictive models, gaps in care, and ACO measure tracking and reporting are all available across disease-specific models.

- Identify your sickest and costliest patients
- Predict patients at risk for index admissions across multiple disease cohorts
- Create registries by diagnosis, condition or other metrics
- Identify patients who are at high risk of a high cost preventable event
- Identify gaps in care
- Stratify your patients according to risk
- Gauge and track success on ACO measures
- Measure your physicians against their peers nationally and across your organization
- Learn how your peers are managing their populations



Optum Risk Analytics

Optum Risk Analytics App

The Risk Analytics module leverages our industry leading capabilities in actuarial and risk oriented contracts to provide critical financial analysis of risk, spend and leakage. It augments the value of the population analytics by providing an additional view of organizational risk.



Optum Registry

Optum Registry App

Optum Registries leverages the power of Population and Risk Analytics, augmented with the most up to date appointment, admit and discharge information to generate patient registries. This tool enables you to build lists of patients such as those with high risk of hospitalization, recent admissions to the hospital requiring outpatient follow up care, gaps-in-care, as well as those not meeting specific ACO measures. New patients that meet registry criteria are identified and automatically added to the registry on a daily basis. Registries of patients along with their supporting data can be exported from the Optum One platform for use in your organization's current care management tools.



Optum Patient Engagement

Optum Patient Engagement App

The Patient Engagement module identifies patients in need of care and outreach, allows your care coordinators to schedule visits, close gaps in care, improve health and meet and report on key performance measures.

- Identify patients in need of care and creates dynamic registries
- Triage the most promising opportunities for intervention
- Filter caseloads by risk factor
- Track interventions
- Perform targeted outreach to patients via secure email or letter
- Track performance on over 100 quality measures
- Report on performance measures
- Develop pre-visit checklist

Hello, Johnny Appleseed ▾ | Administration ▾ | [Patient Search](#) | [Help](#)

Analyze Data
Build Registries ▾
Manage Patients
Report on Operations ▾

Manage Patients

Program List
My Tasks

Welcome View

Actions ▾
Views ▾
Settings ▾
[Refresh](#)
Total Records: 7

<input type="checkbox"/> Overdue Tasks ▾	Patient Name	Sex	Date of Birth	Attributed Provider	Program Name	Program Owner
<input type="checkbox"/> 0	Bush, Richard D	M	72Y	Harysyn, Ryan, MD	High Risk CHF Patients...	Johnson, Miranda
<input type="checkbox"/> 3	Cannon, Shelia	F	69Y	Dibble, Robert	Readmission Prevention	Johnson, Miranda
<input type="checkbox"/> 0	Blitzer, Sandra	F	81Y	Patton, Laura, MS, PA-C	High Risk	Johnson, Miranda
<input type="checkbox"/> 0	Johnson, Jim	M	77y	Harysyn, Ryan, MD	High Risk CHF Patients...	Johnson, Miranda
<input type="checkbox"/> 1	Thompson, Mike	M	67y	Dibble, Robert	Readmission Prevention	Johnson, Miranda
<input type="checkbox"/> 2	Richards, Bob	M	55y	Patton, Laura, MS, PA-C	High Risk CHF Patients...	Johnson, Miranda
<input type="checkbox"/> 1	Meyers, Carl	M	54y	Harysyn, Ryan, MD	Readmission Prevention	Johnson, Miranda



Optum Care
Coordination

Optum Care Coordination App

The Care Coordination module is built on a deep care management ontology and is fully enabled with a library of assessments, care plans and best practices, and allows your clinical staff to provide a full range of care management services.

- Perform top-of-license care management
- Develop nursing assessments using Omaha ontology
- Develop and track care plans
- Manage care transitions
- Link assessments to programs and EMRs
- Develop comprehensive patient profiles

Hello, Johnny Appleseed | Administration | Patient Search | Help

Analyze Data
Build Registries
Manage Patients
Report on Operations

Underwood, Annette A
Patient ID: 123000456DEMO (OCSCareCoordination)
Notes Verification Demographics PDF Patient Summary

Phone Number: 612-009-1414
Sex: Female
Language: English
Payer: Medicare
Medical Plan: MSSP

Date of Birth: 02/21/1941 (74y)
Address: 1322 Central Ave Ne
 Minneapolis, MN 55413

5

Dashboard
Clinical Information
Care Opportunities
Assessments
Care Plan
Program Management
Care Team Contacts
Tasks

Clinical Indicators

Basic Information	Value	Date	Risk Scores	Value	Confidence
Weight(kg)	---	---	30d Readmission Probability	---	---
BMI	---	---	10-Year HCHD Framingham Risk	---	---
BP	---/---	---		3m Value	12m Value
Immunizations		Date	Future Cost Risk	---	---
Flu Vaccine		---	Inpatient Probability	---	---
Pneumococcal Vaccine		---	Inpatient Relative Risk	---	---
Lab Results	Value	Date			
HbA1c	---	---			
LDL	---	---			
Social History	Value	Date Recorded			
Tobacco Use	---	---			

Provider & Clinic

Attributed Provider	---	Attributed Clinic	---
---------------------	-----	-------------------	-----



SDK
(Software
Developers Kit)

Software Development Kit App

The Software Development Kit allows Optum One users to develop their own analytics and workflow apps, all powered by our advanced integrated data set.

Available in later 2014.

About Optum

Optum is an information and technology-enabled health services company serving the broad health care marketplace, including care providers, health plans, life sciences companies and consumers and employs more than 30,000 people worldwide. For more information about Optum and its products and services, please visit www.optum.com.



13625 Technology Drive
Eden Prairie, MN 55344
(866) 386-3404
www.optum.com
Inform@optum.com